

A photograph of a chef and a customer at a restaurant counter. The chef, a man with a ponytail, is leaning over the counter, and the customer, a woman, is sitting on a stool. In the background, there is a fireplace with a fire. The scene is lit with warm, ambient lighting from pendant lamps.

2025 - 2026

Sugarloaf

ACTIVITY GUIDE

Published August 2025

At the heart of Flockhill, Sugarloaf extends the spirit of adventure beyond the plate. Partake in experiences that bring you closer to the craft, the flavours, and the stories of our restaurant.

You'll find outlined in this guide Sugarloaf's activity offerings valid from the **1st of September 2025 to the 31st of March 2026**. Sugarloaf activity bookings can be secured in advance or on site with our dedicated guides creating personal experiences with true Kiwi flair. All Flockhill activities, including Sugarloaf activities, are for guests only and require a minimum of two guests to operate. Bookings for one guest can be secured at the two guest price. All Sugarloaf activities will run as private except for our Chef's Table which requires the purchase of 4 seats to guarantee privacy.

To make an activity booking, please contact reservations@flockhillnz.com.

- ✓ Whether the skies are moody or brilliantly blue, Sugarloaf's activities are a favourite year-round. Be sure to book in advance where possible.
- ✗ If you cancel or change any activities after we have confirmed them, there may be a fee. Please check our T&C's at the end of the guide to learn more.



ON THE STATION

Sugarloaf picnics transform the Flockhill high country into your own private dining room. Set against breathtaking alpine backdrops, each picnic is thoughtfully crafted to complement and elevate your chosen advent



PREMIUM PICNIC \$125PP

FULL DAY ACTIVITY ADD ON

All full day Flockhill activities include a packed lunch, but for those wishing to elevate their experience, we recommend a premium picnic. Picture a table with a view, and hampers prepared by our Sugarloaf chefs.

As premium picnics are only available at designated picnic table locations, please speak with reservations to confirm which activities they pair with.



PRIVATE CHEF \$500PP

LUNCH ACTIVITY OR FULL DAY ACTIVITY ADD ON

Looking for an outdoor dining experience like no other? Indulge in a private station cookout with your own chef, paired with beverage service in a remote alpine setting.

This sought-after experience has limited availability, so we recommend booking well in advance. Cooking over fire is limited to our local fire restrictions.

ADD ON:

CAVIAR & CHAMPAGNE: FROM \$300

HELICOPTER: FROM \$3,700



ON THE STATION



HARVEST DINNER
\$350PP for up to 10 guests

DINNER ACTIVITY

Available December - April

Our Harvest Dinner invites you to step into the garden and dine where the ingredients are grown. Guided by your private chef, you'll hand-pick seasonal produce before sitting down to a four-course vegetarian feast crafted entirely from the day's harvest. This intimate experience is a true celebration of the garden's bounty.



IN SUGARLOAF

Activities in Sugarloaf transform our restaurant into more than just a place to dine. With its striking architecture, warm atmosphere, and views of the surrounding high country, it's a space guests love to linger in.



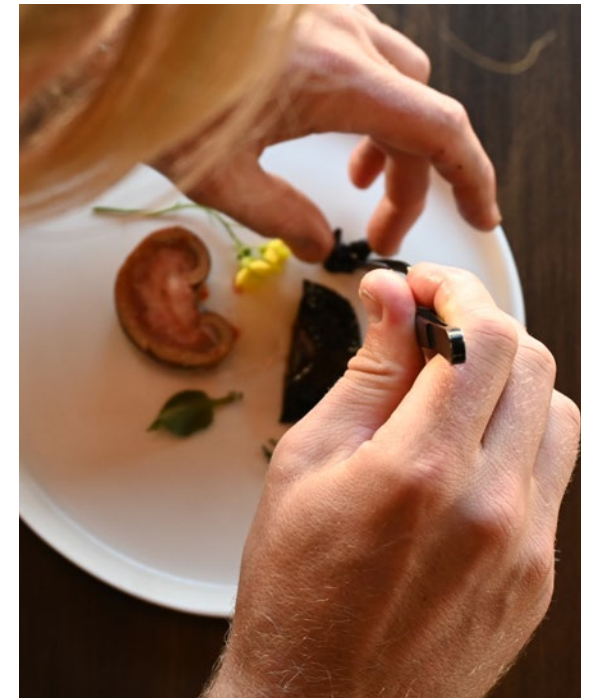
CHEF'S TABLE \$450PP

DINNER ACTIVITY

Elevate your Sugarloaf dining experience and be treated to an exclusive front-row seat at the fire kitchen. Celebrated in the media and by top travel advisors as a “must-do”, it has become one of Flockhill’s most popular activities. Watch flames dance, engage with the chefs, and discover the stories behind each course.

Your Chef’s Table will be hosted by one of our senior team, who have been heavily involved in the planning and execution of your meal. There’s no menu on the table. Instead, you receive all of the best offerings of the season, guided by your preferences and dietary needs with a beverage pairing. It’s a personalised experience, ensuring every detail reflects both your taste and our craft.

Our Chef’s Table seats 6 guests. A minimum of 4 seats must be purchased to guarantee privacy.





IN SUGARLOAF



SUGARLOAF EXPERIENCE

\$600PP for up to 8 guests

3 HOURS

Ages 13 and Above

The Sugarloaf Experience is perfect for food lovers, garden enthusiasts, and anyone who enjoys connecting with the land through flavour. Adapted from our popular cooking class, this experience has been refined to feature more than just what happens in our kitchen.

Your afternoon begins with a guided walk through the garden to harvest herbs and greens. A cocktail session in the bar follows, accompanied by light, garden-inspired snacks. From there, you'll be invited into the kitchen for a hands-on pizza-making class before sitting down to a leisurely lunch of your own creation, served with fresh-picked salad and framed by the stillness of the high country.





Sugarloaf Activity Guide | [Booking Terms and Conditions](#)

To ensure the smooth operation of our Sugarloaf services and to manage availability effectively, we have established the following terms and conditions. These policies apply to all guests, whether booked directly or through an agent.

[For Bookings Made in Advance](#)

Change Policy: Changes are subject to availability and may incur extra fees.

Cancellation Policy: Any cancellations within 14 days of the confirmed activity will incur a 100% cancellation fee.

[For Walk-In Bookings](#)

Cancellation Policy: Cancellations within 24 hours of the confirmed activity will incur a 50% cancellation fee.

[General Terms](#)

No-Show Policy: Guests who do not attend their scheduled activity will be charged the full cost of the activity.

Refund Policy: Refunds are not applicable for cancellations within the specified time frames outlined above.

Weather Cancellations: While we can refine our wilderness, we can never tame it! Activities may need to be amended, moved or canceled due to inclement weather- we will be in contact with you if this is the case. Any bookings canceled by Flockhill due to weather or extenuating circumstances will not incur a cancellation fee.

[Health and Safety](#)

Your safety and enjoyment are our primary concerns. Please ensure you disclose any relevant medical information, including dietary requirements, before your Flockhill arrival so we can accommodate accordingly. The activities carried in our wilderness alpine setting involve some degree of risk. Your guides are trained to manage hazards associated with each activity. Following your guides instruction and working within Flockhill's guidelines will help us ensure your stay is a safe and enjoyable one.